

PT. Kalimantan Fishery

Processor of Block Frozen Sea-caught Shrimp



Introduction

PT. Kalimantan Fishery is located in Banjarmasin, South Kalimantan, Indonesia. Believing that quality is our main concern, we process our products in compliance with HACCP & GMP standard as our quality benchmark. All of our ingredients are kept natural without any chemical used. We keep freshness by establishing exclusive correlation with local fishermen and suppliers, and also by taking advantage of our natural location beside a river.

We specialized in block frozen sea-caught shrimp and have been in the business since 2007. Our factory is operated by management team with over 25 years of experience.

Main Export Destination

- * Japan
- * China
- * Taiwan
- * Korea

Our main export is to Japan and thus, most of our products are using Japan grading of 1st grade and 2nd grade.

Products and Specification

- * PD - Peeled Deveined (pull vein) shrimp
(Size 13/15 – 71/90)
- * PUD - Peeled Un-Deveined shrimp
(Size 91/120 – 300/500)
- * HLSO - Headless Shell-on Shrimp
(Size 8/12 – 300/500)
- * Broken shrimp
(Size 13/15 – 500/800)

All sizes are per lbs (Pound). Size 71/90 means that there is 71-90 pcs of shrimp in 1 Lbs.

Peeled Deveined and Un-deveined PD & PUD (Azure Brand)



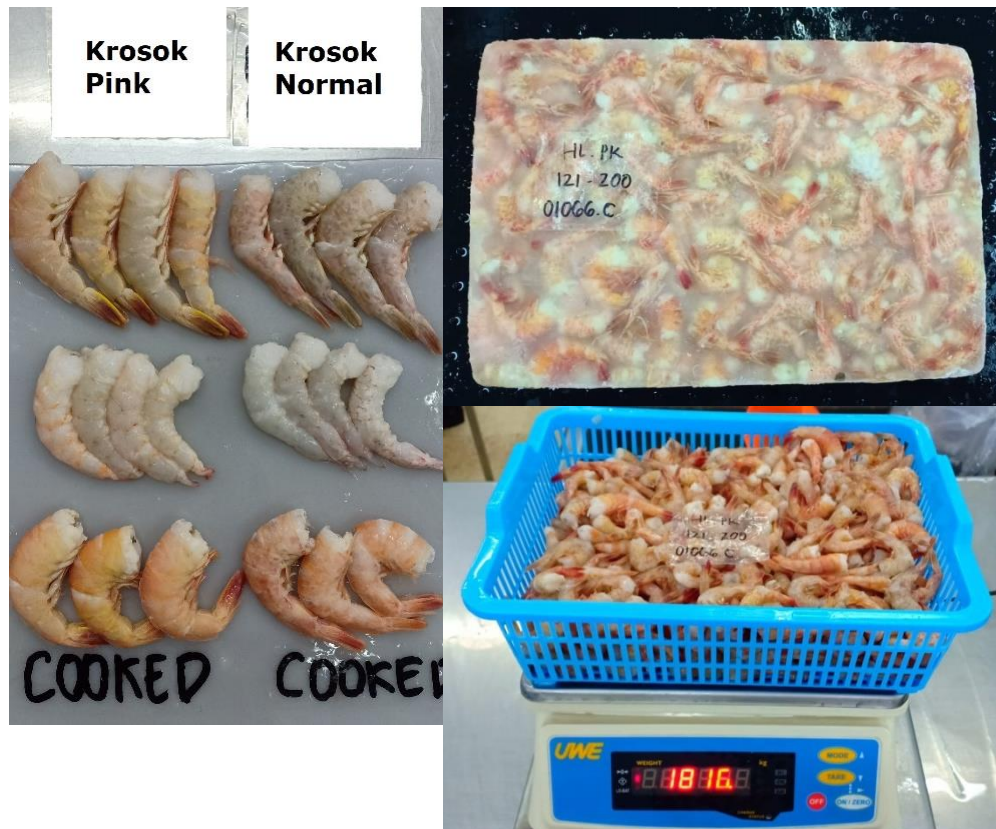
- Each block is 2.0 Kg Net weight.
- Capacity of production for PD/PUD is up to 60Tonnes/Month.
- Main species is *Metapenaeus Brevicornis* and *Metapenaeus Palmensis*.

Headless Shell-on (HLSO) (Ocean Max and Ocean Mix brand)



- Each block is 900 grams Net Weight.
- Capacity of production for HLSO is up to 40 Tonnes/Month.
- Main Species is *Penaeus Indicus*, *Penaeus Monodon* and *Metapenaeus Endeavouri*.

Headless Shell-on (HLSO) (Small Size)



- Each block is 1,8 Kg Net Weight
- Capacity of production for HLSO is up to 40 Tonnes/Month.
- Main Species is *Metapenaeus Palmensis*



PINK KROSOK
(*Metapenaeus Palmensis*)

Broken Shrimp



Size Range

Broken L = 31/40 Up

Broken M = 41/50 – 61/70

Broken S = 71/90 – 121/200

Broken SS = 200/300 – 500/800



- Each block is 2.0 Kg Net Weight
- Capacity of production for Broken Shrimp is up to 20 Tonnes/Month.
- Species are all mixed

Packing Style

- * PD/PUD/Broken items:
No inner carton (Only HDPE polybag)
1 master carton = 6 blocks x 2Kg/block
20ft container = 1,200 master carton
(14,400 KG net weight/20ft container)



- * HLSO items (Ocean Max Brand):
1 inner carton = 2 x 900Grams/block
1 Master carton = 6 inner carton
20ft container = 1,150 master carton
(12,420 KG net weight/20ft container)



Master Carton



Inner Carton

Certification



EU Registration Number	: 586.19.B
Canada Registration Number	: CND. B-124-22
China Registration Number	: CR 097-22
Korea Registration Number	: 19-1 (South Korea)
Vietnam Registration Number	: VR. B-089-22
Russia Registration Number	: RR. B-088-22

Contact Us

- * PT. Kalimantan Fishery
Jalan Tanjung Berkat No. 3, Teluk Tiram, Banjarmasin,
South Kalimantan, Indonesia 70113
- * Telephone : +62 511 3352277
- * Mobile & Whatsapp : +62 821 5354 6000
- * E-mail : edo.kalfish@gmail.com
- * Website : www.kalfish.co.id