



WELCOME TO

KIRANA



KIRANA



KIRANA

PT KIRANA FOOD INTERNATIONAL
TUBAN - INDONESIA



- ABOUT KIRANA

PROJECT

Project : Agustus 2018 – September 2019
Start Production : 7 September 2019

ADDRESS

Head Office : Jl. KIG Selatan IV Kav. C 9
Kawasan Industri Gresik 61121
Telp. +6231 3976351 – 3
Processing Plant : Jl. Raya Pakah Ponco KM,
Tuban 62382 - Indonesia
Sumber Agung, PLumpang
Telp. +6235 6881 2888

AREAS & FACILITIES

Total Land Area : 60.763 m²
Total Building : ± 20.000 m²



- ABOUT KIRANA

THE MAIN FUNCTION

Independent Productions Room (Line) kapasitas : 20.000 MT RM base

Total Cold Storage Capacity : 8.000 MT

Energy Saving and Environment Friendly System :

1. Refrigerant System :

- CO2 + Ammonia
- Inverter Control

2. Air Conditioning System and Air Handling Unit

- Media : Water
- Ion + Stabilization

3. In door and Out door LED Lamp

4. CCTV

5. Water Treatment

- RO (Reverse Osmosis)
- JIA / Chlorine Automatic Diffuser
- Filter
- UV

6. Electrical Energy Source

- PLN : 2.997 kVA
- Genset : 1.000 kVA





- ABOUT KIRANA

Other

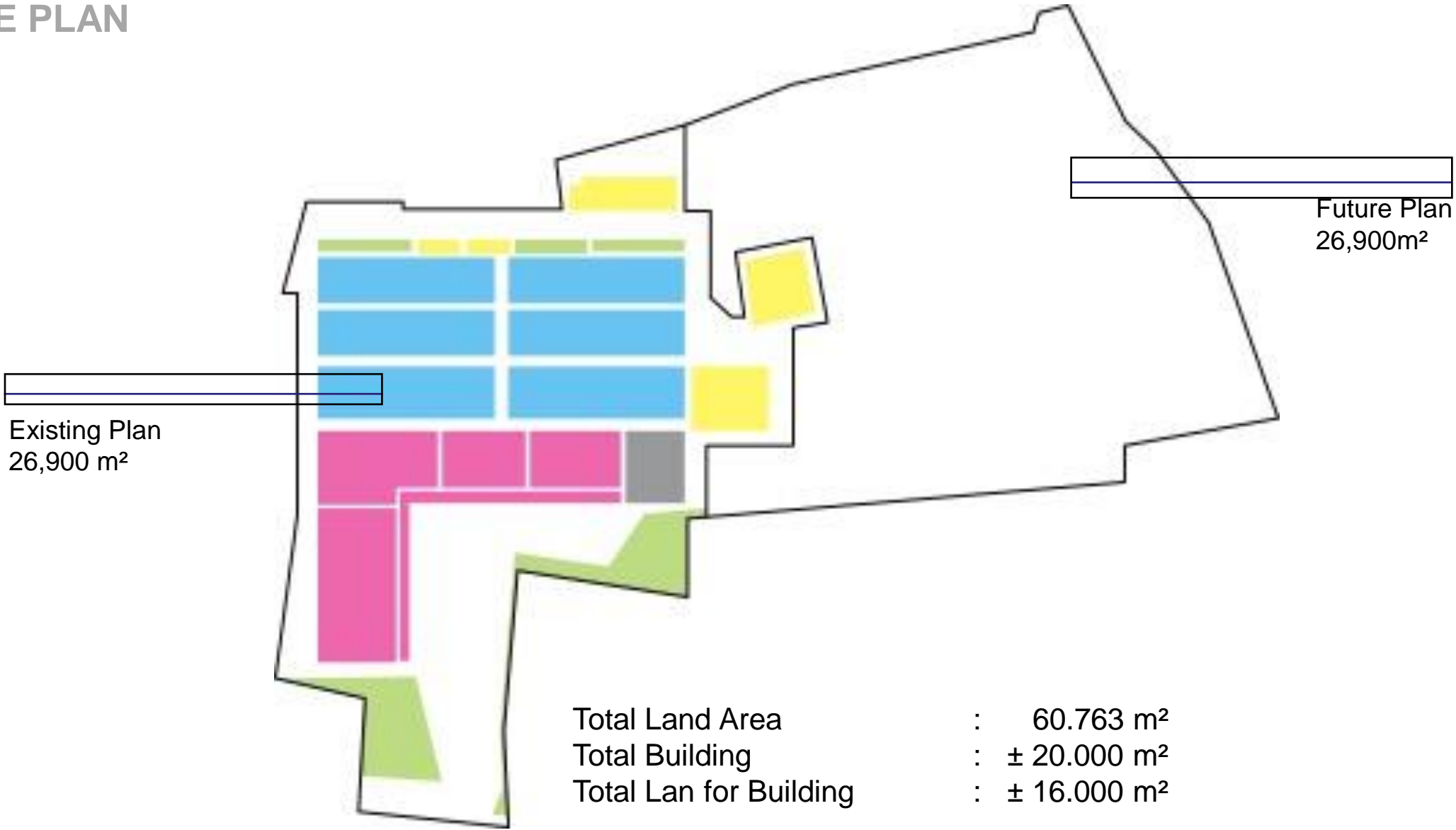
- Changing Room
- Rest Room
- Laboratorium
- Office
- Dry Storage
- WWTP
- Public / Green Space

Worker

Male	:	167
Women	:	743
Total	:	910



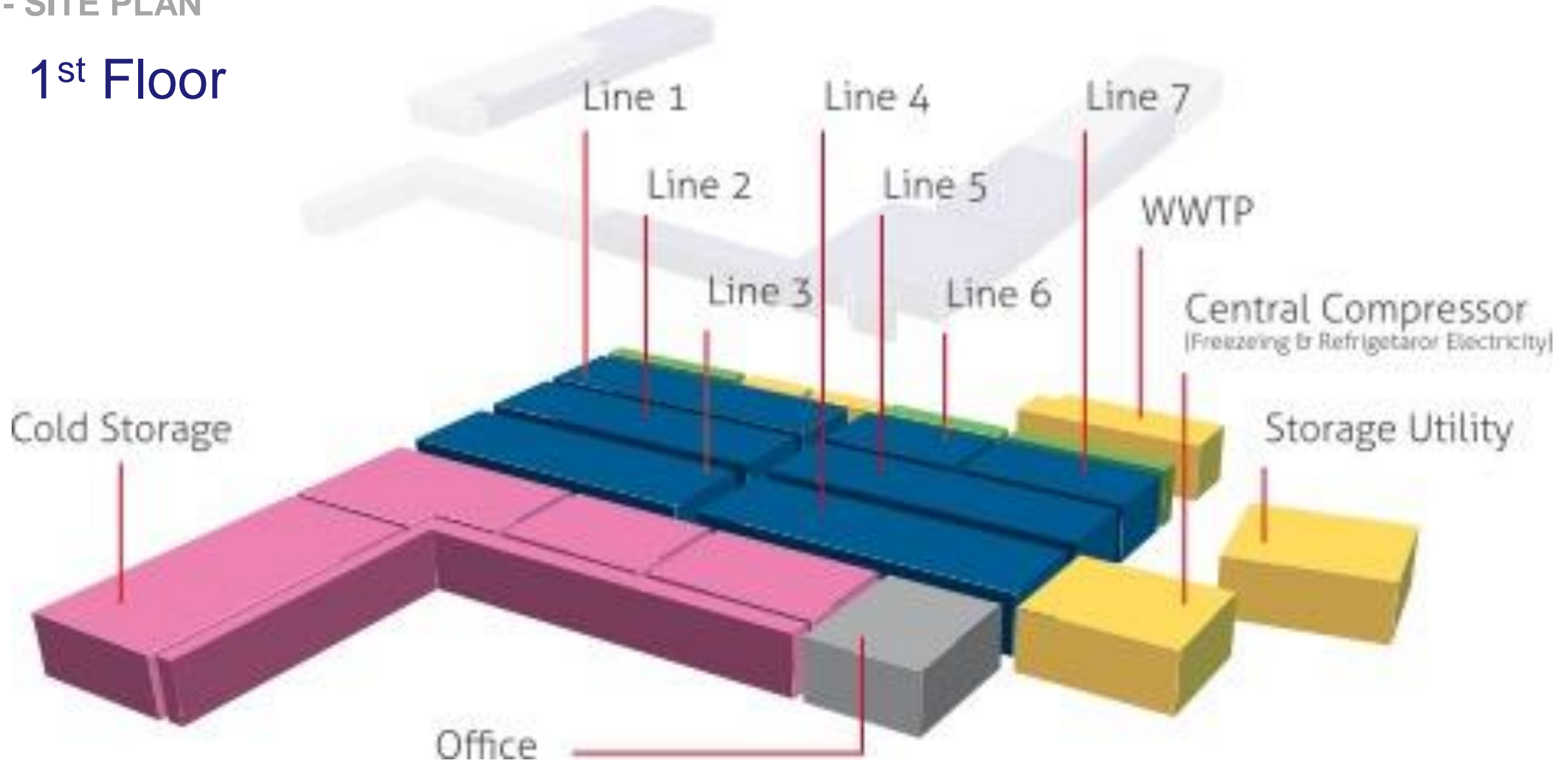
- SITE PLAN





- SITE PLAN

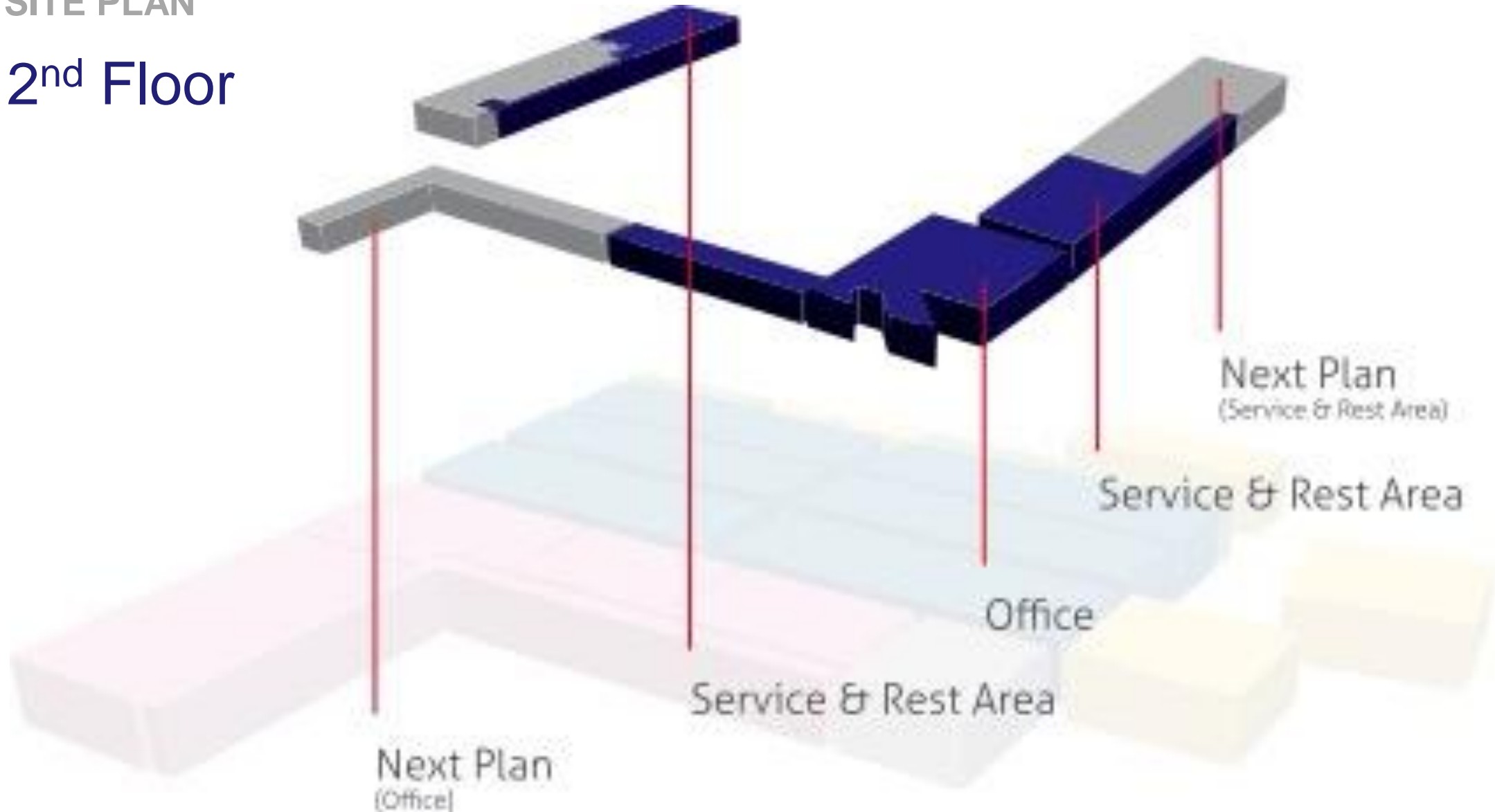
1st Floor





- SITE PLAN

2nd Floor





- CERTIFICATION

Sertifikat Kelayakan Pengolahan (SKP)

1. 19992/35/SKP/BK/X/2021 (Frozen Pelagic Fish)
2. 19995/35/SKP/BK/X/2021 (Frozen Fish Fillet)
3. 19994/35/SKP/BK/X/2021 (Frozen Fish Roe)
4. 19993/35/SKP/BK/X/2021 (Frozen Crab)
5. 21088/35/SKP/BK/I/2022 (Frozen Demersal)
6. 21091/35/SKP/BK/I/2022 (Frozen Cephalopods)
7. 21090/35/SKP/BK/I/2022 (Frozen Tuna)
8. 21089/35/SKP/BK/I/2022 (Frozen Salmon & Trout)
9. 14803/35/SKP/BK/V/2020 (Frozen Raw Shrimp)
10. 15042/35/SKP/KR/VI/2020 (Dried Flying Fish Roe)
11. 16685/35/SKP/BK/XII/2020 (Frozen Value Added Seafood)
12. 16686/35/SKP/BK/XII/2020 (Frozen Wakame)
13. 17339/35/SKP/BK/III/2021 (Frozen Slipper Lobster)

Instansi Karantina Ikan (IKI)

000627 / IKI-BKIMP.2 / IX / 2021 (Instalasi Karantina Ikan)

Cara Karantina Ikan yang Baik (CKIB)

000627 / CKIB-BKIMP.2 / IX / 2021 (Cara Karantina Ika yang Baik)



- CERTIFICATION

HACCP

1. 107/PM/HACCP/PB/10/21 (Frozen Crab)
2. 108/PM/HACCP/PB/10/21 (Frozen Fish Roe)
3. 109/PM/HACCP/PB/10/21 (Frozen Pelagic Fish)
4. 016/PM/HACCP/PB/02/22 (Frozen Cephalopods)
5. 017/PM/HACCP/PB/02/22 (Frozen Demersal Fish)
6. 018/PM/HACCP/PB/02/22 (Frozen Salmon)
7. 019/PM/HACCP/PB/02/22 (Frozen Tuna)
8. 032/PM/HACCP/PB/06/20 (Frozen Shrimp)
9. 013/PM/HACCP/PK/08/20 (Dried Flying Fish Roe)
10. 152/PM/HACCP/PB/01/21 (Frozen Value Added Seafood)
11. 153/PM/HACCP/PB/01/21 (Frozen Wakame)
12. 190/PM/HACCP/PB/03/21 (Frozen Slipper Lobster)

USA FDA Registered Number

14993629274

Korea Approval Number

15 – 232 (Korea Selatan)

CANADA Registered Number

CND.B-250-16

Marine Stewardship Council (MSC)

MSC-C-58196

British Retail Consortium (BRC) Version 8.0

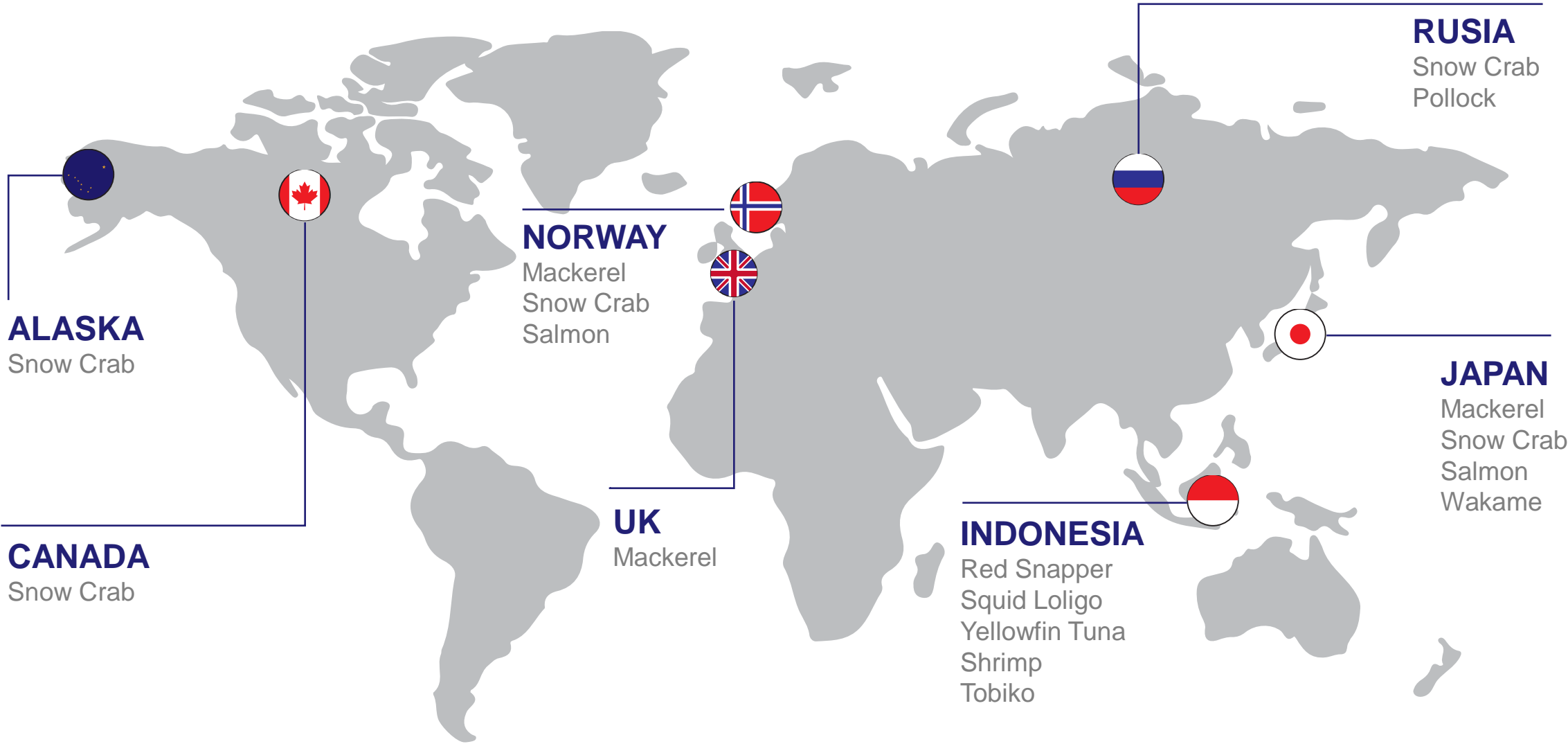
Grade A

Halal

ID35410000007420120



- RAW MATERIAL SOURCE



- PRODUCT

KIRANA



Atlantic Mackerel or known as Norwegian Mackerel caught in Norwegian Sea with its finest quality. Loaded with omega-3, antioxidants and protein, Atlantic Mackerel is superfood to boost your metabolism and improve your health



WHOLE ROUND



FILLET NATURAL CUT

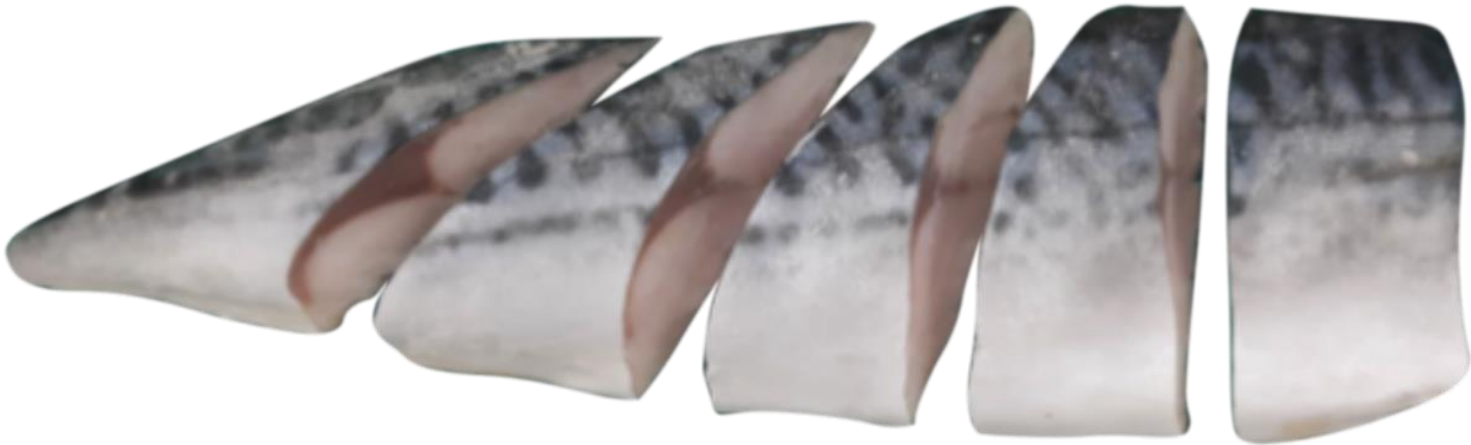


FILLET PORTION CUT



KIRANA

- PRODUCT
FINISH PRODUCT



- PRODUCT

PROCESSING ACTIVITY OF MACKEREL



- PRODUCT

KIRANA



We present high quality Salmon products from raw materials of Chum salmon that from Japan and Atlantic salmon from Norway. our products are processed in our certified facilities with a combination of skilled workers to produce more value-added products.



FILLET PORTION CUT



KIRANA

- PRODUCT

FINISH PRODUCT



- PRODUCT

PROCESSING ACTIVITY
OF SALMON



- PRODUCT

KIRANA



Snow Crab are caught in Northeast Atlantic (FAO 27). Loaded with Protein 18g, Salt 1.3g, Carbohydrate 0-1g, Energy 86kcal, and fat 1g.



CLAW MEAT POSON)



CLAW MEAT (RING CUT)



LEG BUTTERFLY



LEG MEAT

- PRODUCT
FINISH PRODUCT



- PRODUCT

PROCESSING ACTIVITY OF SNOW CRAB



- PRODUCT

KIRANA



Red snapper, as the most popular of all white fish, has a firm texture and a sweet nutty flavor. It has low-calorie, lean source of protein that is rich in selenium, vitamin A, potassium and omega-3 fatty acids. It can be broiled, grilled, pan-fried, steamed, baked or deep-fried. Red snapper's lightly sweet flavor goes well with almost any seasoning.



FILLET SKIN ON PORTION CUT



KIRANA

- PRODUCT
FINISH PRODUCT



- PRODUCT

PROCESSING ACTIVITY
OF SNAPPER





Our Raw Material Origin Russia. Alaska Pollock is a different species than the Pollock found on the Atlantic coast, and it is the most common type of Pollock in U.S. markets. All Alaska Pollock is wild-caught in the northern Pacific Ocean.



FROZEN DUSTED POLLOCK



FROZEN FILLET POLLOCK



KIRANA

- PRODUCT

FINISH PRODUCT



- PRODUCT

PROCESSING ACTIVITY
OF POLLOCK





Yellowfin tuna is known for its mild flavor and is usually eaten raw. Our yellowfin tuna is cut into steak or saku and frozen to maintain the freshness. It is available in various sizes and can be used in a variety of dishes. It is typically prepared by grilling, searing, or broiling. Another one way to prepare yellowfin tuna is to serve it in sushi.



FROZEN SAKU CUT



FROZEN STEAK CUT

- PRODUCT

KIRANA



Flying Fish Roe which is also known as Dried Tobiko in Japanese with a Latin name *Cypselurus* spp and the type of this fish itself could literally fly above the water. Natural Flying Fish Roe eggs are small and ranging from 0.5 to 0.8mm.



DRIED TOBIKO

- PRODUCT

FINISH PRODUCT



- PRODUCT

PROCESSING ACTIVITY
OF TOBIKO





Squid is one of the most popular kind of seafood that accounts for about 20% of all cephalopod species caught in South East Asia. This kind of squid also known as Squid loligo. Other Our Cephalopods product is Cuttlefish. Cuttlefish is a kind of seafood that has high protein value to boost your protein diet



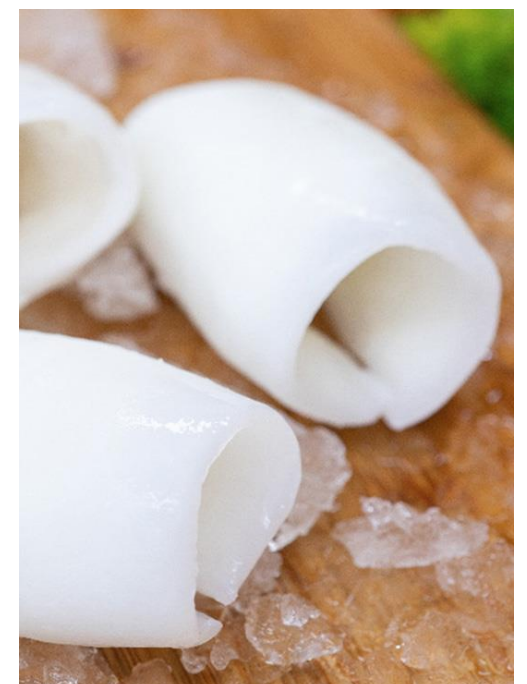
WHOLE ROUND



FILLET RING CUT



WHOLE CLEANED



FILLET CLEANED



KIRANA

- PRODUCT
FINISH PRODUCT



- PRODUCT

PROCESSING ACTIVITY OF CEPHALOPODS





KIRANA

- PRODUCT

Seasoned Wakame is the seaweed that our Raw Material are Origin from Japan. Seaweed that we process and we do seasoning (adding additional ingredients)



SEASONED WAKAME



KIRANA

- PRODUCT

FINISH PRODUCT



- PRODUCT

PROCESSING ACTIVITY
OF WAKAME





- PRODUCT

Slipper lobster (*Thenus orientalis*) is found in the Indo-West Pacific region. The delicate flavor is often times sweeter than that of other lobster species, and the texture has been characterized as a cross between a lobster and a shrimp



SLIPPERS LOBSTER



KIRANA

- PRODUCT

FINISH PRODUCT



- PRODUCT

PROCESSING ACTIVITY OF SHRIMP





KIRANA

- SECURITY & CUSTOM





KIRANA

- OFFICE





KIRANA

- WORKER FACILITY





KIRANA

- STORAGE & LOADING DOCK





KIRANA

- LABORATORY





KIRANA

- MACHINE ROOM





KIRANA

- WTP RO System





- WWTP AREA





- STUFFING

KIRANA





ENJOY OUR

KIRANA